



Description of the Work

The new basket-handle arch bridge, designed by Somerset Engineering and constructed by PCL, will replace the 85-year old functionally obsolete, dual 320' main spans with a taller, wider, single 550' span. The project will widen around 2 miles of US 68/KY 80 from two lanes to four lanes and will add a sidewalk/bike path.

Freyssinet/Hebetec Scope

Freyssinet and Hebetec supplied the strand, lifting machinery and technical assistance needed to install the system and complete the lift. Two operators were in charge of the lift, each controlling half of the lifting system (Two pumps/four jacks). The jacks were fixed to the top of the temporary tower structures. The operators were in constant radio contact with each other and with fellow engineers on the ground to ensure that the bridge maintained its horizontal level throughout the lift. After lifting, the bridge was moved laterally, then lowered onto its bearings.

General Contractor :

PCL

Owner :

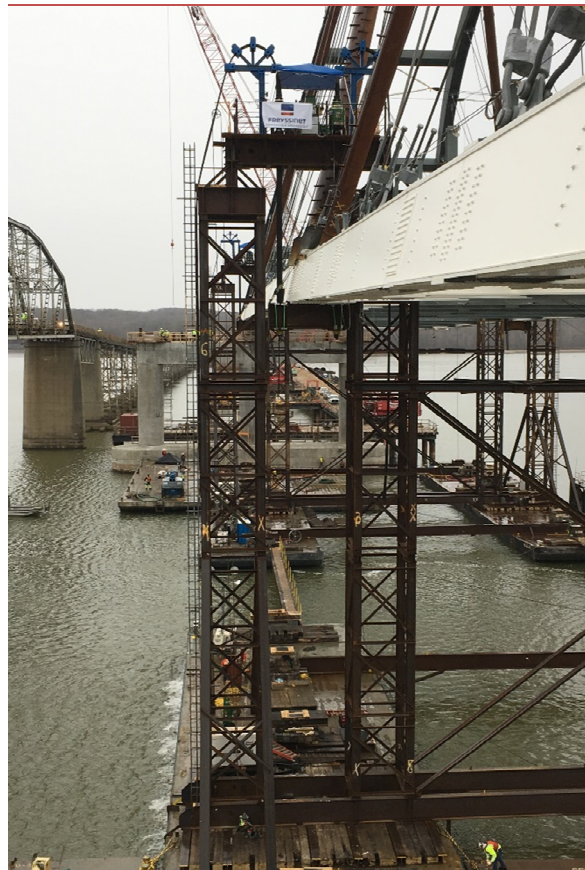
KY Transportation Cabinet

Beginning of works :

January 2017

End of works :

February 2017



Weight	2,500 Tons
Lifting distance	70'

Equipment used

Strand Jack H-400	8 units
PA-4-8 Pump	4 units
Strand Guide	8 units