



Solutions
Foreva

HISTORIC BUILDINGS

REPAIR,
REINFORCEMENT
AND PROTECTION



I M P R O V E , P R E S E R V E , S E C U R E



FREYSSINET
SUSTAINABLE TECHNOLOGY

THE PROBLEMS

Whether constructed in timber, stone, brickwork or concrete, a building undergoes changes over the course of time. Freyssinet offers proven solutions for the repair, reinforcement and protection of these structures.

■ AREAS OF APPLICATION

- Any building with stability problems or needing reinforcement.

■ PROBLEMS IDENTIFIED

- Cracks, excessive deformation, partial destruction or breaking of elements
- Timber: rot, peeling, splitting, ring shake, cavities, missing sections, broken joints
- Glued-laminated timber: rot, peeling, undersized sections
- Masonry: repointing needed, dislocation, instability, missing mortar
- Reinforced concrete: corrosion of reinforcements, flaking, spalling, leaching, peeling

■ NATURAL CAUSES

- Aging of materials, chemical attack, freeze/thaw cycles
- Timber: excessive humidity, decay caused by insects or fungi, sun damage (UV)
- Masonry: shifts in soil structure, inadequate stress distribution, leaching of masonry
- Concrete: chlorination, carbonation, water infiltration

■ STRUCTURAL CAUSES

- Change of use, changes in regulations
- Design error, poor design or implementation
- Material fatigue
- Shifts in masonry structure

■ ACCIDENTAL CAUSES

- Variable loads
- Ground movements
- Fire
- Earth tremors



Freyssinet, with more than sixty years of experience, as a main contractor in speciality work, has developed the Foreva® offer, a turnkey service guarantee for the long-term enhancement of your structures.



Grouting
of masonry and
installing tie-rods

OUR SOLUTIONS

Foreva® solutions enable Freyssinet to carry out rehabilitation work in line with industry standards and good practice while respecting the environment.

■ FEASIBILITY STUDY

■ EXECUTION METHODS

■ EXPERTISE

Repair and reinforcement of wooden structures

- Repair of cracked or broken sections using a seaming technique (**Foreva® Wood Reconnect**)
- Restoration of peeling glued-laminated timber using a remeshing technique (**Foreva® Wood Glulam**)
- Repair of timber frame supports using scarf joints (**Foreva® Wood Scarf**)
- Repair of structural beams using tying techniques (**Foreva® Wood Splint**)
- Restructuring timber framed walls and structural members (**Foreva® Wood Frame**)
- Beam reinforcement by connection of a polymer concrete compression flange (**Foreva® Wood Inertia SUP**)
- Beam reinforcement by connection of a mounted timber foundation plate (**Foreva® Wood Inertia INF**)
- Reinforcement of zones subject to tensile forces using bonded carbon fibre composite (**Foreva® Wood Fabric**)
- Increasing the bearing capacity of a floor by laying a self supporting floor plate (**Foreva® Wood Floor**)
- Additional prestressing (Freyssinet System)

Repair and reinforcement of brickwork and stone buildings

- Wall tying using composite glass or carbon fibre rods (**Foreva® Stone RFG** and **Foreva® Stone RFC**)
- Repointing masonry
- Surface treatment, remineralisation
- Bracing masonry arches with composite reinforcement
- Restoring the thrust lines in arches (Freyssinet Flat Jack)
- Surface prestressing (Freyssinet System)
- Underpinning work

Repair and reinforcement of concrete structures

- Realkalisation of coatings by electrochemical repair (**Foreva® PH***)
- Chloride extraction work on coatings by electrochemical repair (**Foreva® Cl***)
- Crack grouting (**Foreva® TF Inject**)
- Surface treatment



Underpinning work
at the Louvre



Wall tying using
composite rods



Floor reinforcement with
compression flange



Reinforcing a structure
using a mounted foundation plate



Reconstituted and treated concrete

Our specialist teams are on hand to help you identify the Foreva® solution that meets your requirements.



MAIN OFFICE

44880 Falcon Place, Suite 100
Sterling, VA, 20166
Phone: (703) 378-2500 - Fax: (703) 378-2700
freyssinet@freyssinetusa.com

MIDWEST REGIONAL OFFICE

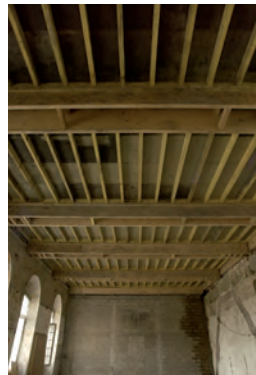
1444 Farnsworth Ave, Suite 505
Aurora, IL 60505
Phone: (630) 820-6070 - Fax: (630) 898-3336
freyssinet@freyssinetusa.com

SOUTHEAST REGIONAL OFFICE

990-C Norcross Industrial Court
Norcross, GA 30071
Phone: (678) 291-9750 - Fax: (678) 291-9757
freyssinet@freyssinetusa.com

FREYSSINET CANADA LIMITÉE

8200 Decarie Boulevard, Bureau 200
Montreal, Canada H4P2P5
Phone: (514) 739-1110 - Fax: (514) 739-0503
freyssinet@freyssinet.ca



FREYSSINET
SUSTAINABLE TECHNOLOGY

WWW.FREYSSINETUSA.COM