

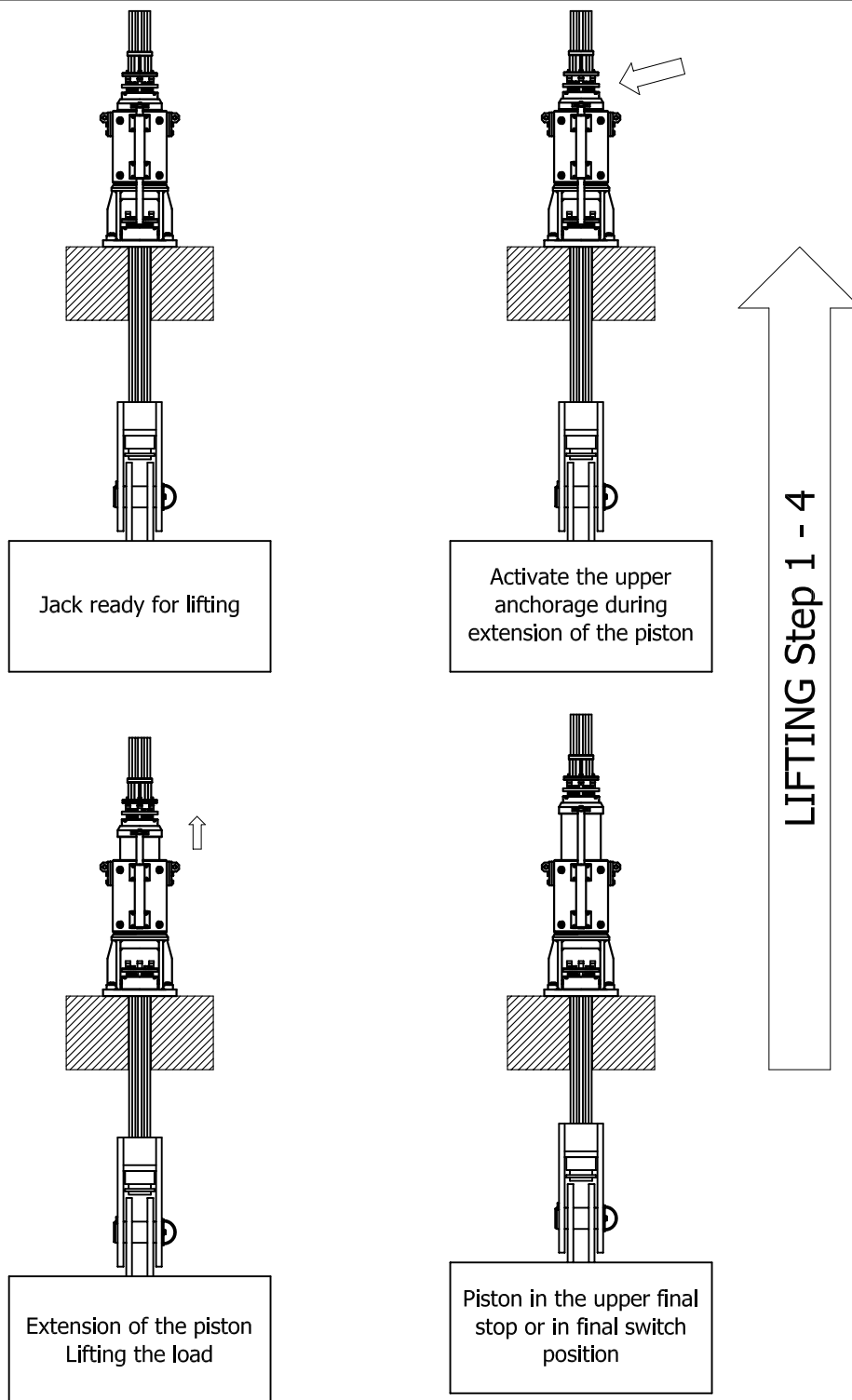


2005

DATASHEET

Lifting

# Information



**Hebetec Engineering AG**

Sagi 1

CH-3324 Hindelbank (Switzerland)

Tel: +41 344 117 171

Fax: +41 344 117 170

e-mail: [hebetec@bluewin.ch](mailto:hebetec@bluewin.ch)

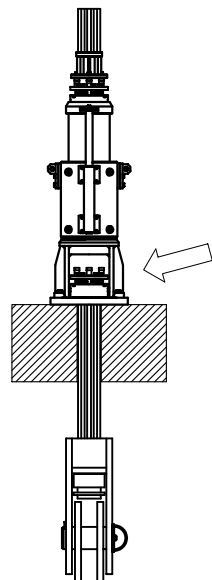


2005

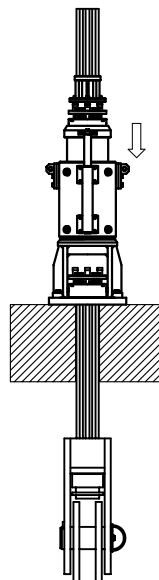
DATASHEET

Lifting

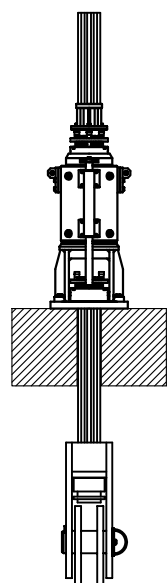
# Information



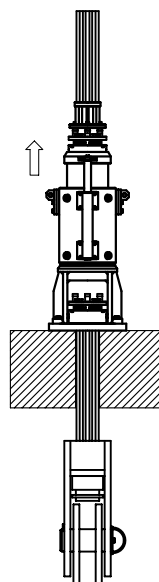
Activate the lower anchorage by slowly retraction



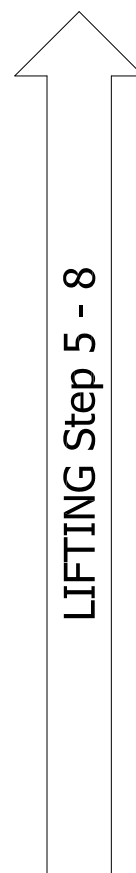
Fast retraction of the piston



Piston at lower final stop or position final switch



Piston extent for lifting



**Hebetec Engineering AG**  
Sagi 1  
CH-3324 Hindelbank (Switzerland)

Tel: +41 344 117 171  
Fax: +41 344 117 170  
e-mail: [hebetec@bluewin.ch](mailto:hebetec@bluewin.ch)

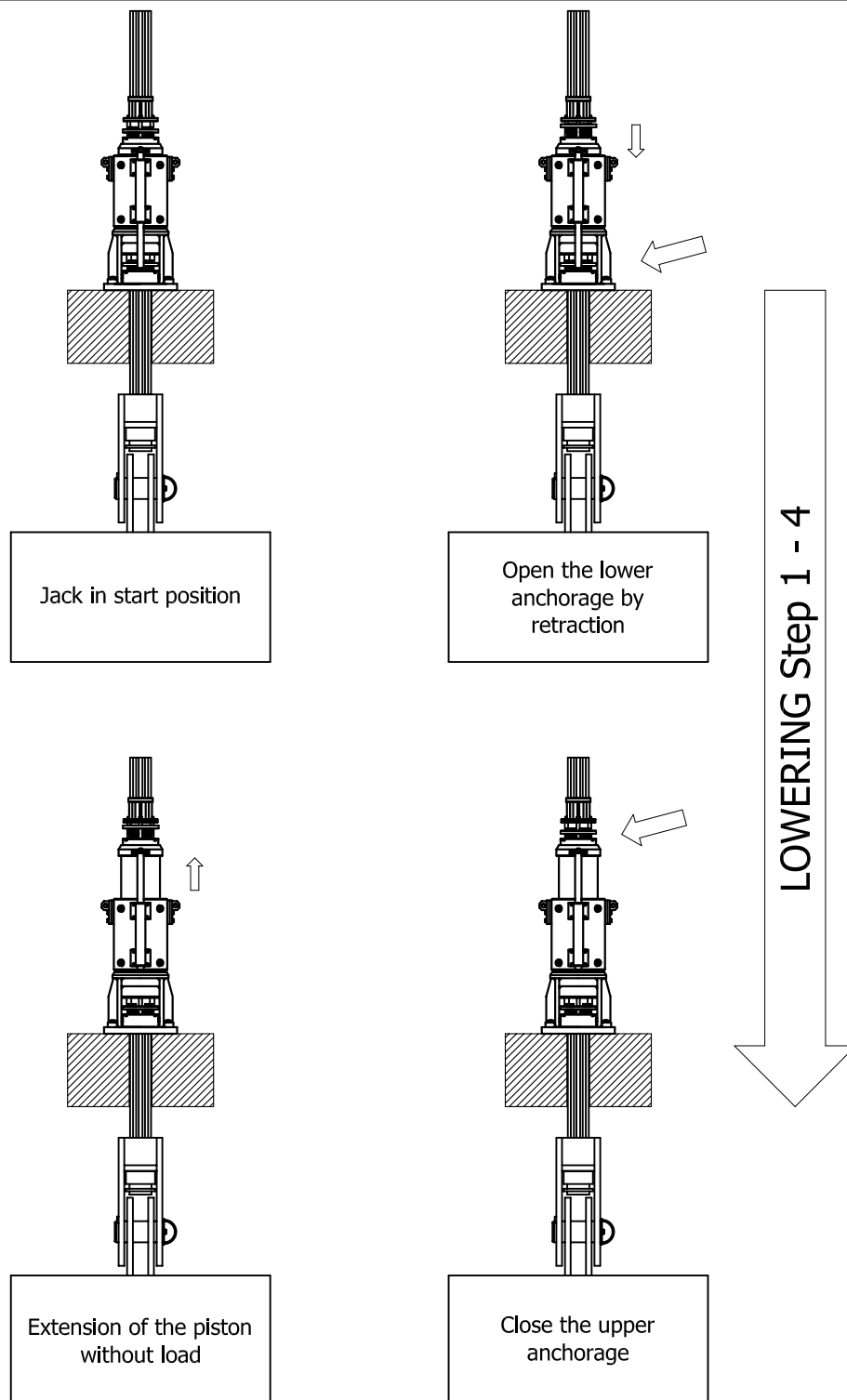


2005

DATASHEET

Lowering

# Information



**Hebetec Engineering AG**

Sagi 1

CH-3324 Hindelbank (Switzerland)

Tel: +41 344 117 171

Fax: +41 344 117 170

e-mail: [hebetec@bluewin.ch](mailto:hebetec@bluewin.ch)

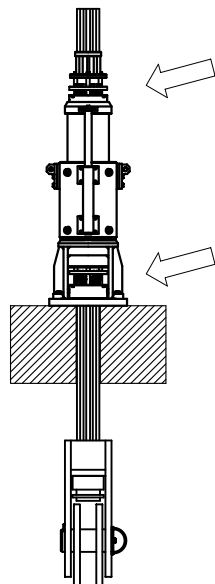


2005

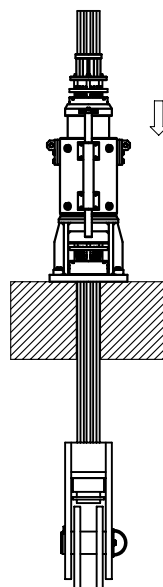
DATASHEET

Lowering

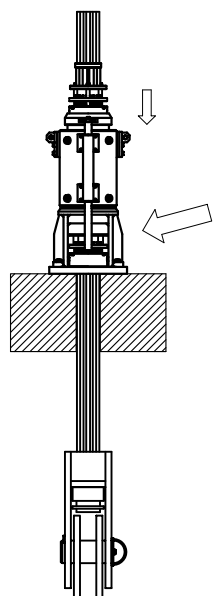
# Information



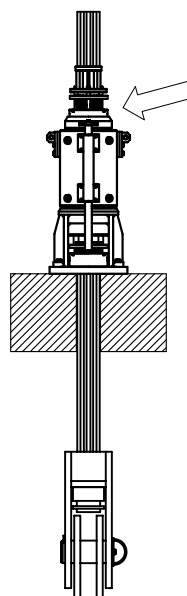
Activate the upper anchorage and open the lower anchorage



Retraction of the piston  
Lowering the load



Lower shortly before final stop  
Close and activate the lower anchorage



Open the upper anchorage  
Jack ready for the next lift



**Hebetec Engineering AG**  
Sagi 1  
CH-3324 Hindelbank (Switzerland)

Tel: +41 344 117 171  
Fax: +41 344 117 170  
e-mail: [hebetec@bluewin.ch](mailto:hebetec@bluewin.ch)